

ARGON PLASMA COAGULATION (APC)

IMMEDIATE DESTRUCTIVE EFFECT

- Non contact technique.
- Thermal effect.
- Superficial homogenous tissue necrosis.
- Argon : colourless, non odorous.

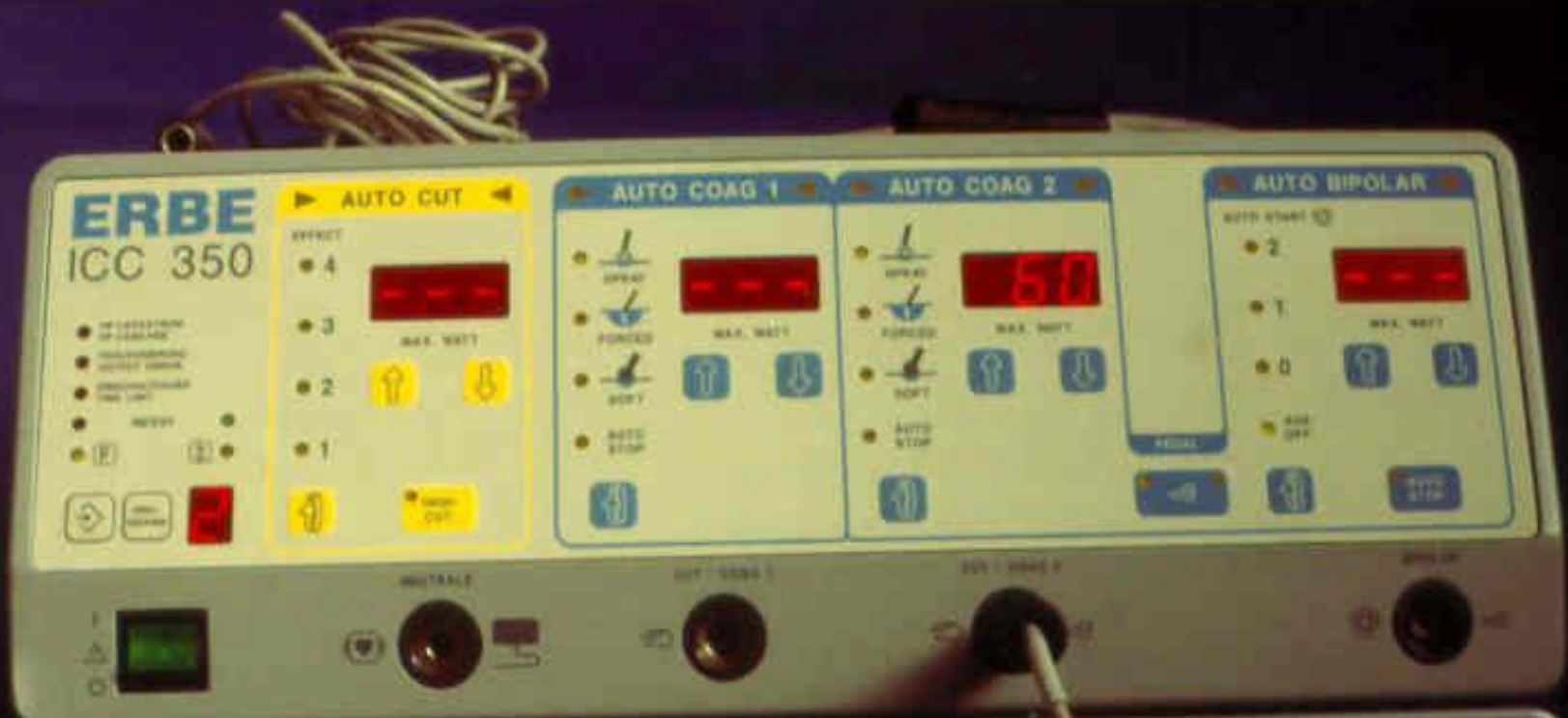
Chemically inert and non toxic.

In its ionized state, argon forms no chemical compounds with other elements and substances.

MATERIAL (APC)

- H.F. generator.
- Monopolar electrode + argon applicator.

Argon gas is ionized between electrode and target tissue = plasma.





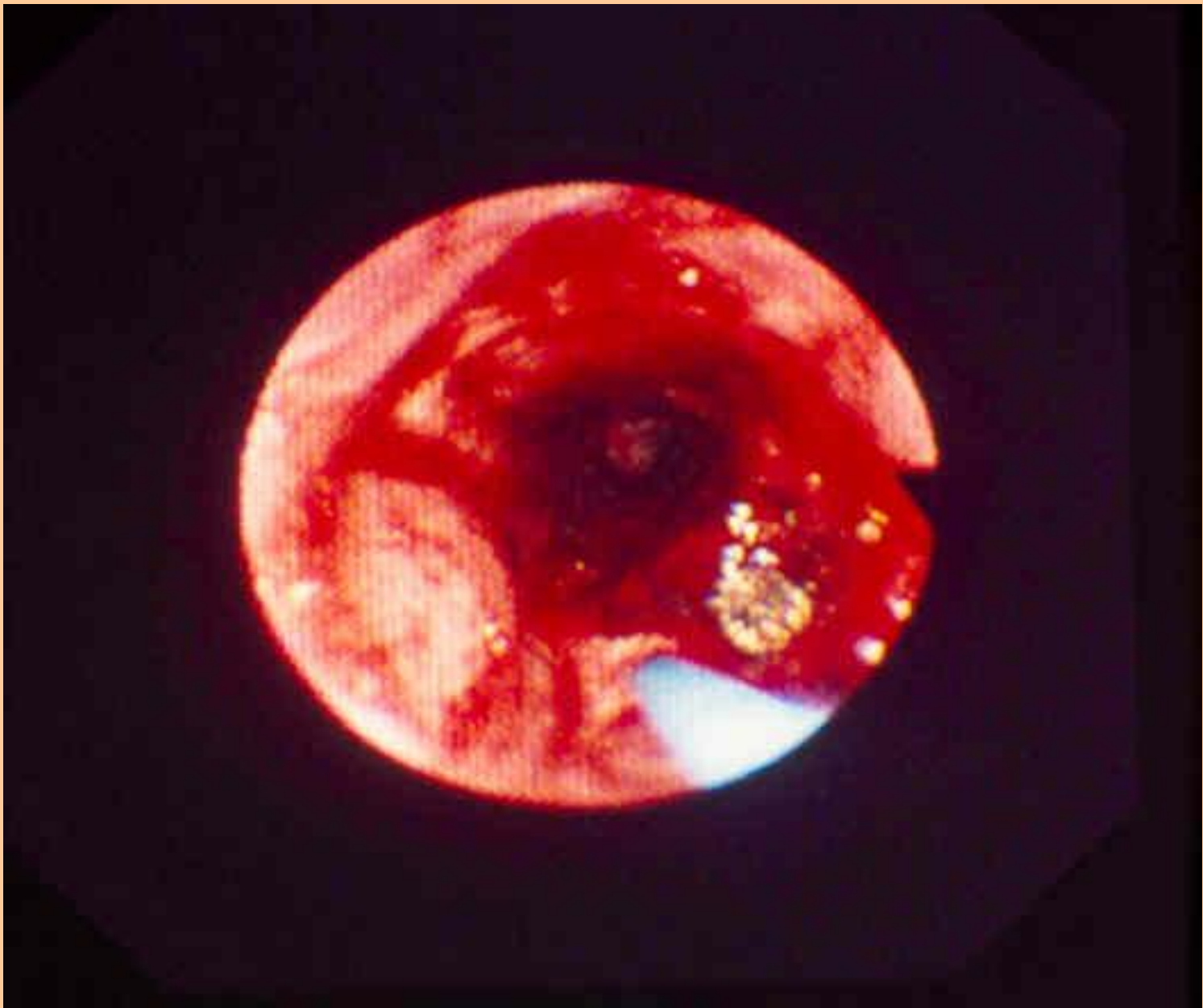






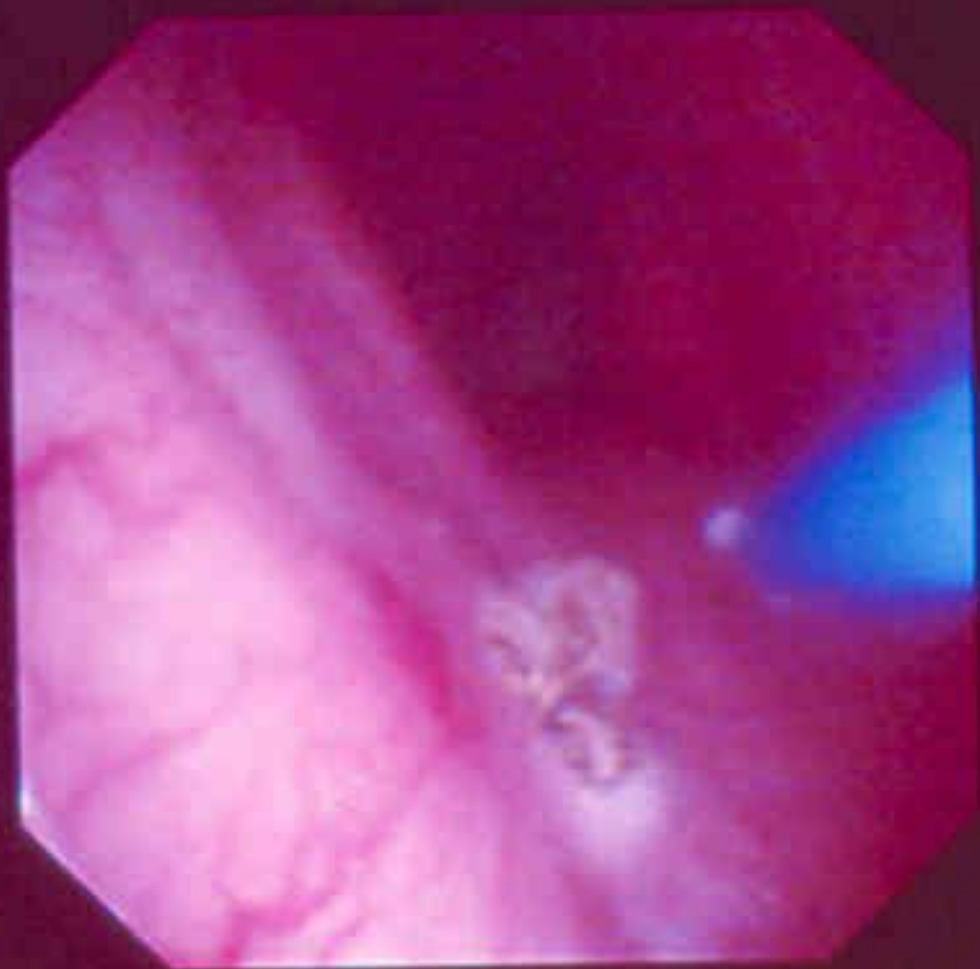
METHOD (APC)

- Flexible monopolar probes.
- Isolated F.O.B.
- Outpatient therapy. L.A.
- No contact between electrode and tissue.
- The direction of the plasma jet depends on the impedance of coagulated tissues but not on the direction of argon flow (sweeping method).









MAIN CHARACTERISTICS (APC)

- No cartilage destruction.
- Main indications :
 - superficial bleeding
 - little bleeding tumors or after biopsy.
- Increases the cost of H.F. thermo-coagulation.

ONLY FRIENDLY QUESTIONS NOW